

Company Blu

WILL

a choreographic and sound score from
William Shakespeare's Sonnets



www.companyblu.it



WILL from William Shakespeare's Sonnets

A choreographic/sound score composed and performed live by Charlotte Zerbey, sound collaboration Spartaco Cortesi, artistic collaboration Giovanna Rogante, light Vincenzo Alterini

WILL is inspired by the famous collection of poems by Sir William Shakespeare that deal with universal themes related to life, birth and death, but most of all, love and the passage of time.

In Shakespeare's poetic vision time modulates and orients desire. The figures that come to life in the poems are metaphorical characters, "Fair youth", "Dark Lady" and "Rival Poet", evocations of love and of the profound, of the language of darkness that breaks conventions. It's the seduction of the mysterious and the manifold that resides in the poetic passion.

On stage, the tension of desire is the fundamental thematic element and supports the vision and procreative impulse of the body.

Eros as a universal force of creation which in the choreography takes the form of physical vitality, dark matter, sometimes instinctive, purely poetic and human that time itself ...

...slowly disintegrating aggregates and, in a dialectical process, cardiac, is a dissolution of beauty. Artistic creation can only try to be an erosive rival of this condition. Dance, unlike other art forms, coincides and follows the same course of life.



A Company Blu production, with support of : Ministero per i Beni e le Attività Culturali, Regione Toscana, Sestoidee Istituzione Servizi Culturali del Comune di Sesto Fiorentino



Will

Charlotte Zerbey

Technical requirements

Black dance carpet

Black backdrop

Wings or stage covered laterally height of light 6,5mt with covered sky

note : The performance needs an entrance from backstage left, (looking from the audience)

There is also an alternative to do the show with the audience situated in the round on three sides of the space.

A –

Technical material :

Set for a 10 x10mt stage (standard)

36 Channel dimmer 3kw-dmx

05 Etc four 575-750 w 25°-50°

10 Par 1 kw cp61+ tg

24 qps 1 kw + tg+ band 4 alette

Computerized light mixer

Light booth in back of audience

B --

Reduced set up

30 Channel dimmer 3kw-dmx

05 Par 1 kw cp61+ tg

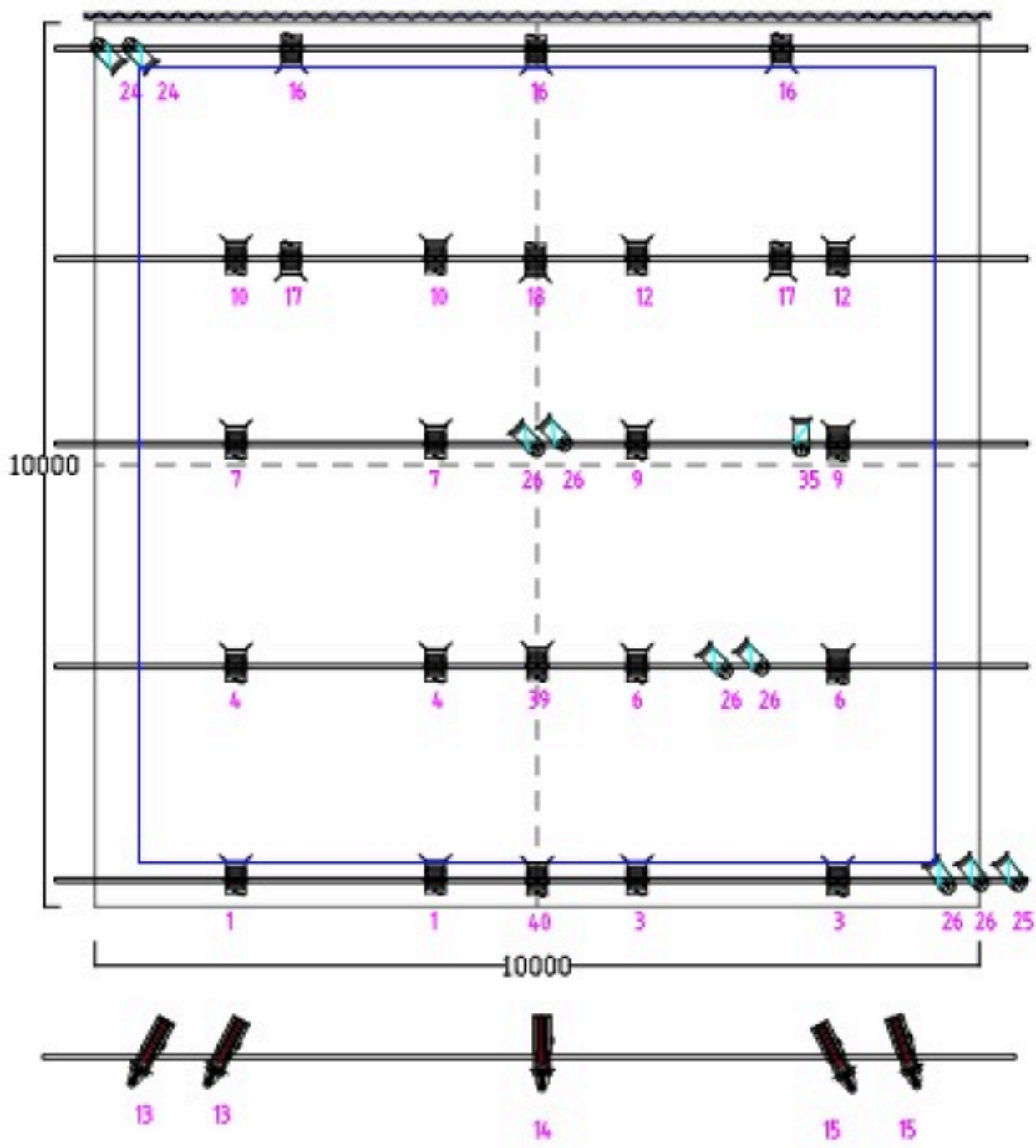
24 qps 1 kw + tg+ band 4 alette

Computerized light mixer

Light booth in back of audience

Charlotte Zerbey Will

36 units	channels dimmers
5 units	 Etc zoom 25°-50°
10 units	 Par 1 kw cp61+ lg
24 units	 Ops 1 kw + lg + band
Luci: Vincenzo Alterini	





Company Blu

WILL

AUDIO TECHNICAL RIDER

(no amp. voice set)

- PA- system : 3 speakers (see map)
- analog audio mixer with separate main out L-R faders
+ pre-fader aux send or sub channel to speaker on the back
(to control 3 speakers separately)
- stereo D-I box (or 2 mono)
- desktop for PA console to arrange audio mixer, laptop, D-I box
(120 x 60 cm min.)
- audio cables from speakers to PA console

for details on PA power specifications, please give us info about performance space

ref./info: spartaco.cortesi@tiscali.it - companyblu@companyblu.it



production information:

Company Blu

organization: Matteo Siracusano

direction: Alessandro Certini, Charlotte Zerbey

Via Cadorna, 18 50019 Sesto Fiorentino

Firenze, Italia

office 0039 055440265 cell. 0039 3286699457

companyblu@companyblu.it

www.companyblu.it

Company Blu is supported by: MIBAC, Regione Toscana,
Istituzione Sestoidee di Sesto Fiorentino, compagnia associata
ADAC